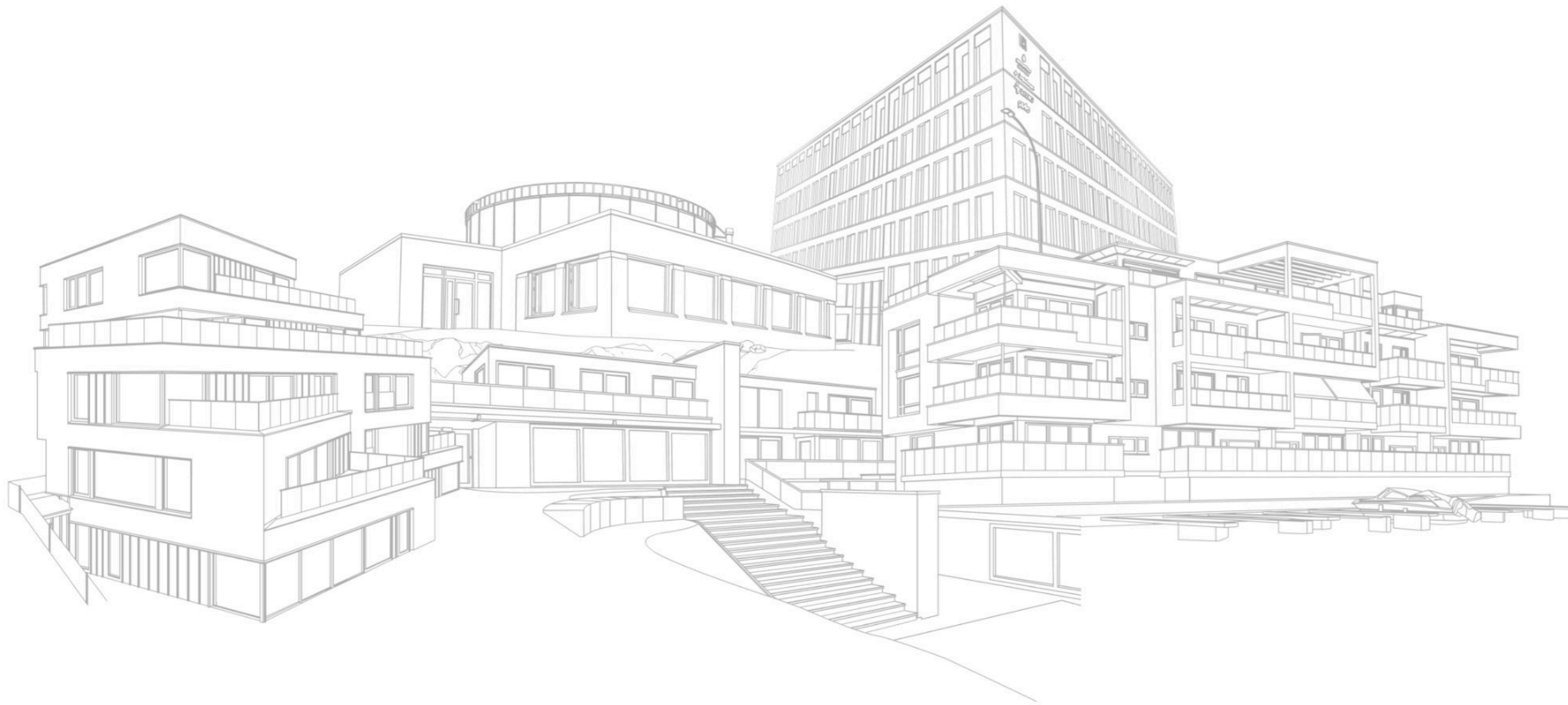


CUSTOMISED SOLUTIONS



ANNO 1884





Welcome to STROMMEN GROUP



OUR MISSION

We are committed to providing homeowners, building contractors and architects with exceptional windows, doors, bi-folding doors, sliding doors and curtain walls. Our team of experienced engineers and estimators are on hand to deliver customised solutions for private houses and commercial buildings.



OUR STORY

The first Strømmen product was introduced in Norway already in 1884, and since the World Exposition in 1889, it has been an internationally known quality brand.

In 2005, all our production was moved to Lithuania and we opened two new factories in 2015 and 2020 with a combined floor space of 7600 square meters for aluminium and timber products.



To strengthen our position in the Northern European market and continue to grow, we have established sales offices in Norway, Sweden and the United Kingdom.

With more than 60 employees, many years of experience and advanced technology, we manufacture products that fulfil the most demanding requirements in Europe.



ALUMINIUM SYSTEMS



The endless design options and durability of aluminium makes it the perfect choice for sophisticated buildings. All our aluminium products are engineered to meet the highest requirements of energy-efficiency, security and design.

We offer a complete range of profile systems, including the high-end **Schüco** profiles and the cost-effective **Strømmen** profiles.



Sliding Doors



More light and wider space

Bi-Folding Doors



Expand your horizons

Windows & Doors



Define your outlook

Curtain Walls



Architectural freedom in planning and execution



TIMBER

Strømmen is one of the oldest Norwegian manufacturers of sliding patio doors. Our timber products are designed to withstand the harsh Norwegian climate and give your home a warm feeling. We offer a variety of different finishes and material options. The Passive 76 profile is ideal for premium properties with high demands for energy-efficiency and architectural details. Sky frame is an unique and innovative design that minimizes visible profiles and enlarges your living space. With an opening width up to 12 meters, Sky Frame sliding patio doors create space for a brighter and more beautiful living.

Bi - Folding Doors



Complete access to your terrace

Sliding Doors



Styles that last

Fixed Frame Windows



Design freedom

Husøy Havn

Welcome to Husøy Havn. A project with modern apartments in Tønsberg, where the salty breeze is always close. An impressive living area where you can enjoy wonderful sea views and pleasant outdoor areas.

All apartments are equipped with balconies or terraces, large windows and sliding systems. Our aluminium bi-fold doors with Schüco ASS 70 FD system is an impressive solution for this project.

PRODUCTS	Aluminium bi-folding doors
SYSTEMS USED	Schüco ASS 70 FD
LOCATION	Tønsberg, Norway
ARCHITECT	Spir Arkitekter AS
CONTRACTOR	Skanska Norge AS
DATE	2020



Lillevarde

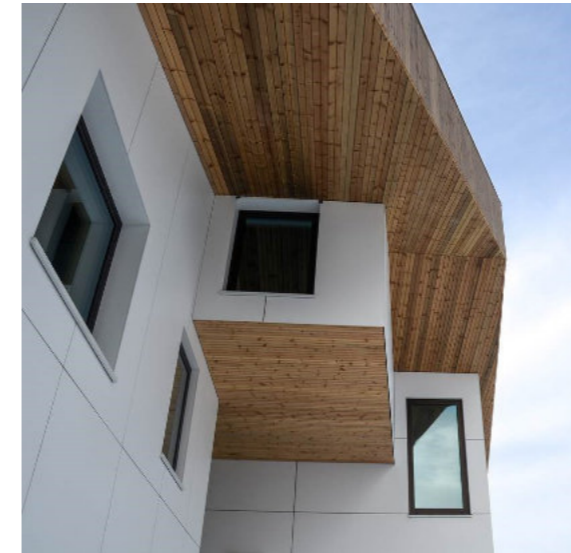
The Lillevarde project consists of ten luxury apartments spread over two residential buildings. Special emphasis has been put on the architectural qualities with outstanding views and angles.



PRODUCTS	Windows, entrance doors, sliding doors and fire-resistant doors
SYSTEMS USED	Schüco AWS 90.SI+, Schüco ADS 90.SI, Schüco ASS 70.HI, Schüco ADS 80 FR 30
LOCATION	Nesodden, Norway
ARCHITECT	Lie Øyen Architects AS
CONTRACTOR	Hersleth Entreprenør AS
DATE	2020

Villa Faun

Four exclusive apartments outside Oslo. The building is beautifully designed with state of the art solutions.



PRODUCTS

Windows, doors, bi-folding doors, sliding doors and facades

SYSTEMS USED

Schüco AWS 70.HI, Schüco ADS 70.HI, Schüco ASS 70 FD, Schüco ASS 70.HI, Schüco FWS 50.HI

LOCATION

Oslo, Norway

ARCHITECT

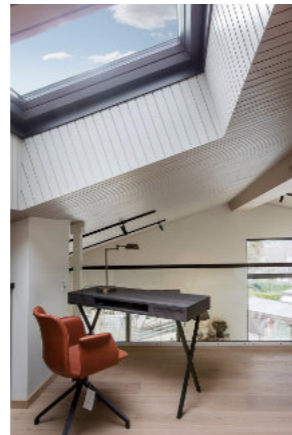
Various Architects AS

CONTRACTOR

Ansnes Entreprenør AS

DATE

2017



Østensjøveien 16

Commercial building at Bryn in Oslo. We have supplied and installed the glass facade for the entrance and the skylight that covers the atrium.



PRODUCTS	Glass facade and skylight
SYSTEMS USED	Schüco FWS 50.SI, Schüco ADS 70.HI, Schüco AWS 70.HI
LOCATION	Oslo, Norge
ARCHITECT	Arkitema Architects AS
CONTRACTOR	Betonmast Romerike AS
DATE	2019

Private house on Nøtterøy

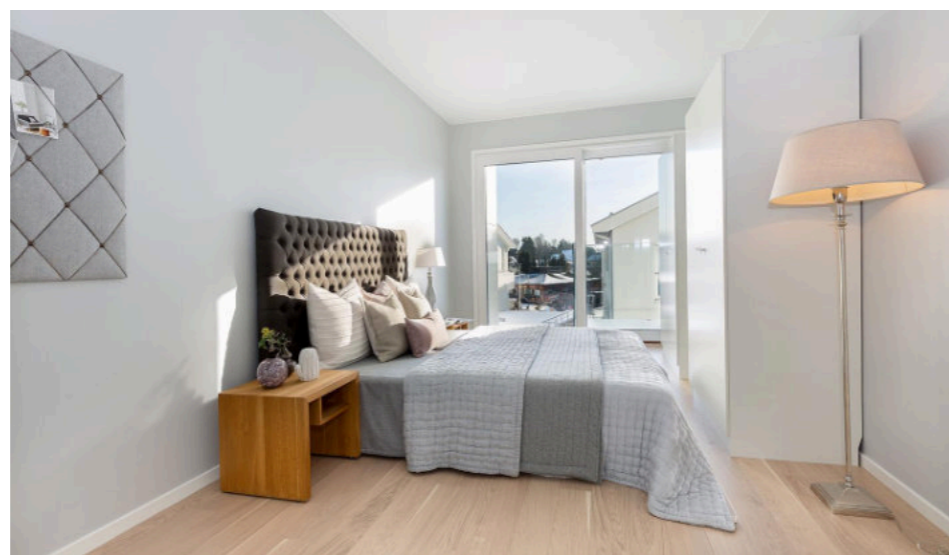
Schüco ASS 80 FD provides an impressive solution for commercial projects and luxury homes. More comfort, more living space: each door segment folds compactly to create a wide access to the outside.

PRODUCTS	Bi-folding doors
SYSTEMS USED	Schüco ASS 80 FD
LOCATION	Nøtterøy, Norway
DATE	2015



Sæter Terrasse

Exclusive apartments at Nordstrand outside Oslo. We supplied large sliding doors in timber and timber with aluminum cladding. The building has strict requirements to sound insulation and was rewarded for its design.



PRODUCTS	Sliding doors
SYSTEMS USED	Passive 76
LOCATION	Oslo, Norge
ARCHITECT	A-lab AS
CONTRACTOR	Kruse Smith AS
DATE	2016

Kaldnes Brygge

Apartment complex with a fantastic location in the center of Tønsberg, Norway.



PRODUCTS	Windows, doors and facades
SYSTEMS USED	Schüco AWS 90.SI+, Schüco ADS 90.SI, Schüco FWS 50.HI
LOCATION	Tønsberg, Norway
ARCHITECT	Spir Arkitekter AS
CONTRACTOR	WK Entreprenør AS
DATE	2016

Private House

Large and exclusive private house in Oxford. We supplied all windows, doors and sliding doors in aluminum. The largest sliding door has a width of 5.8 meters.



PRODUCTS	Windows, doors and sliding doors
SYSTEMS USED	Schüco AWS 70.HI, Schüco ADS 70.HI, Schüco ASS 70.HI
LOCATION	Oxford, UK
DATE	2017

Lidl – a sustainable store concept, Sweden



PRODUCTS	Curtain wall systems, doors and windows
SYSTEMS USED	Schüco FW 50+, AWS/ADS 70.HI, AWS 75.SI+/ADS 75.SI, Schüco AWS/ADS 65
LOCATION	Sigtuna Stadsängar, Sweden
ARCHITECT	LINK Arkitektur
CONTRACTOR	EAAB
DATE	2020

Why Strommen?



FAST QUOTES

Our estimators provide comprehensive quotes and technical drawings. We will ensure that the optimal products are selected for your building project.



PROJECT MANAGEMENT

By having our own factories, we have full control over every aspect of the manufacturing process: improved lead times and a wider product range.



MANUFACTURING

One of our project managers will be assigned to your order as soon as it is confirmed. In this way, you have a single point of contact for all your concerns: technical guidance, complete drawings and documentation, production schedules, delivery & installation.



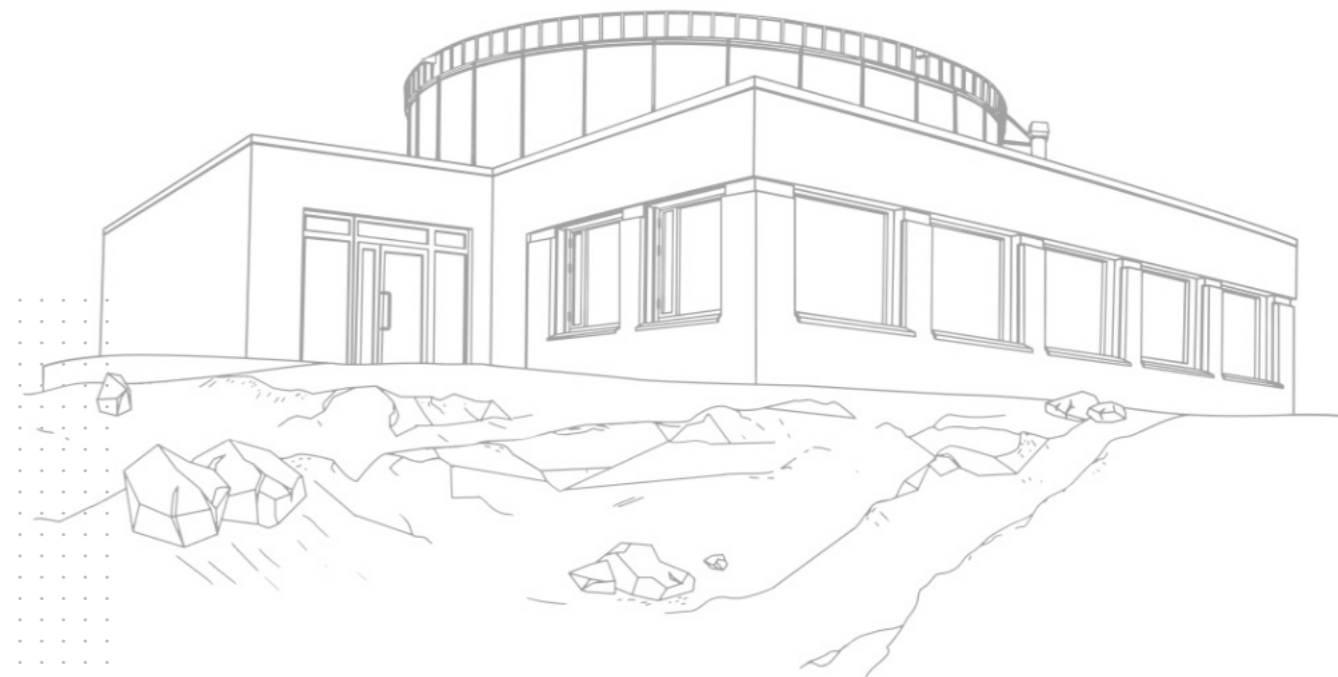
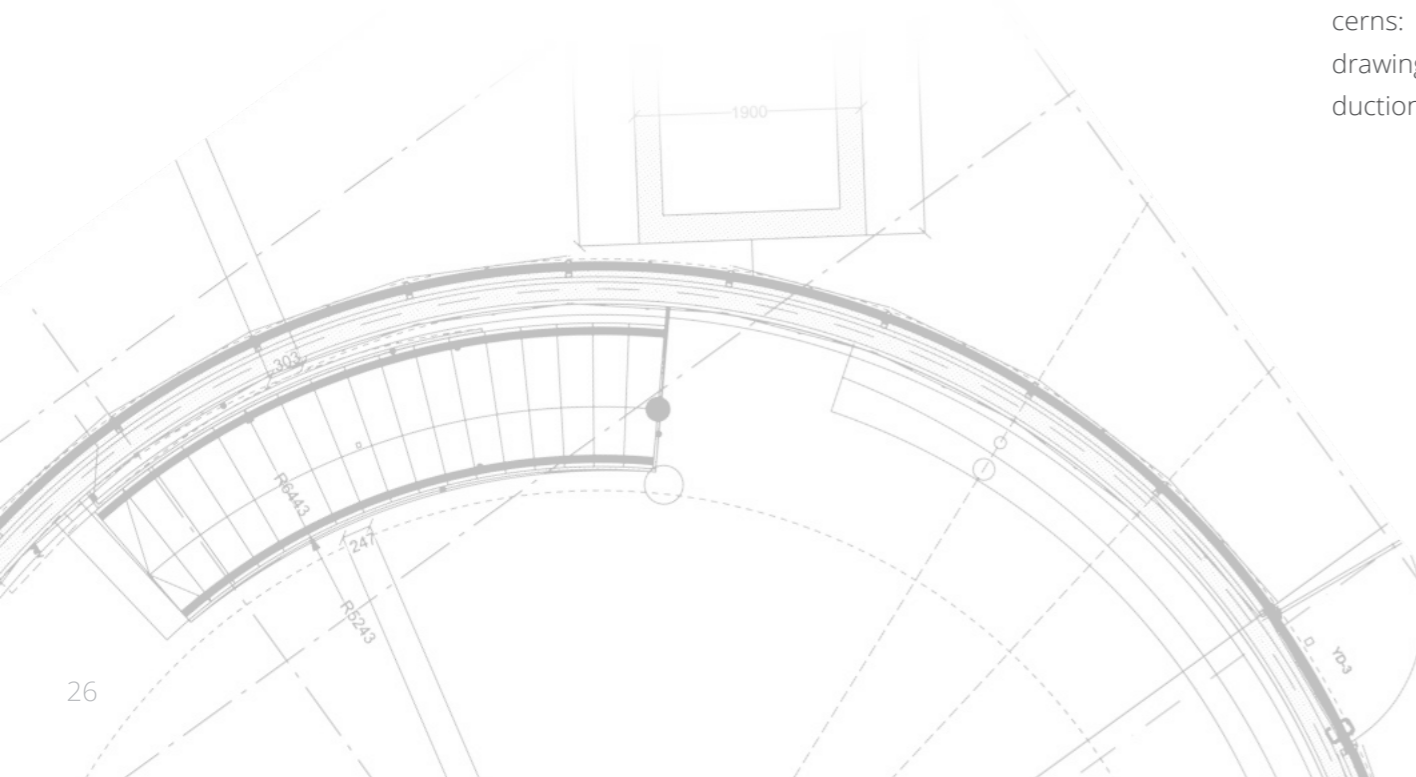
DELIVERY

All our products are packed on custom-made pallets to protect them during transport and delivered directly to the construction site.



INSTALLATION

Our team of experienced installers can carry out the installation of your products in a safe and timely manner.



Norway

Strømmen AS
Kilengaten 31
3117 Tønsberg
norge@strommengroup.com
+47 33 33 66 90

Sweden

Strømmen Trysil AB
Lagmansvägen 29
141 62 Huddinge
[sverige@strommengroup.com](mailto: sverige@strommengroup.com)
+46 705 89 77 13

Lithuania

Strommen LT
Vingio st. 7
LT-54317 Kaunas
lietuva@strommengroup.com
+370 618 87500

United Kingdom

Strommen UK LTD
St John's Innovation Centre
Cowley Road, Cambridge CB4 0WS
salesuk@strommengroup.com
+44 7804 490942

DISCOVER OUR
LATEST PROJECTS

