

FACADES THAT LAST, TIMBER THAT INSPIRES

GROW YOUR BUSINESS WITH A
NEW TIMBER SYSTEM – DESIGNED
TO KEEP YOU IN CONTROL

ARK



bARK

CLICK & BUILD



Mölnåls Stadshus, Tyréns



Swedish Innovation in Wood

bARK Click & Build is a climate-smart glulam façade system – tested, certified, and built to last. We combine architectural freedom with technical reliability and deliver a complete solution from drawing to finished façade.

STABLE, SUSTAINABLE, AND REFINED – MADE IN SMÅLAND

With Click & Build, we make timber façades accessible to more businesses. As a glazier or contractor, you can step into the next generation of glass and façade construction with the same precision, safety, and climate performance as in the largest projects. For us, innovation is not

about complexity – it's about simplicity. That's why Click & Build is designed around your daily reality, a tool that allows you to take on larger projects with the same resources while meeting the market's growing demand for sustainability.



A Platform for Your Growth

Click & Build is created for those who want to grow without losing control. Many companies see the potential of timber, but hold on to the belief that it is difficult to handle, requires specialist skills, or drives up costs. Our solution is designed to address these concerns and turn them into opportunities.

As a glazier, contractor, or building system supplier, this gives you the chance to offer modern timber-based façades and partitions without investing in your own production line. With Click & Build, you can expand your offering

step by step. The platform enables you to take on more and larger projects, while at the same time building competence and credibility in your market.

Quality and sustainability are built into the system. Your customers today expect solutions that meet the highest standards for design, energy efficiency, and environmental performance. With bARK, you get a system that meets those demands while being easy to understand, quick to assemble, and safe to hand over when the project is complete.

Simplicity in Your Construction Process

One of the most common arguments against timber is that it is complicated on-site. Click & Build was developed to prove the opposite. You can choose between two options, both of which simplify your work and give you flexibility:

Stick – a glulam-based kit delivered directly to your site. With clear instructions and easy-to-handle components, assembly is straightforward, and the solution can be adapted to your project's specific needs. Stick gives you full freedom and is the natural choice if you want to keep control over glass procurement and installation.

Partition – prefabricated frames, with or without glass – your choice, lifted into place and installed directly. An option that saves time, frees up resources, and makes it possible for you to take on projects that would otherwise require more capacity than you have. Partition is especially suited for entrances, shop-fronts, or interior solutions where precision and speed are critical.

Both alternatives deliver the same high level of performance and security. The difference lies in how you prefer to work and which resources you have available.



Nibe Visitor Center, Möller Arkitekter

Long-Term Security for You and Your Customer

Timber has sometimes been seen as less durable than metal, but modern technology and rigorous testing have changed the game. Click & Build is based on glulam profiles that are moisture-protected, fire-rated, burglary-resistant, and certified for Nordic climates.

Through advanced CNC machining, you get timber profiles with the same precision as me-

tal-based systems. Surface treatments with UV protection and pigmentation ensure that the timber surfaces retain their appearance and function over time. For you, this means delivering a façade that meets all technical requirements while offering a living, natural expression that lasts well into the future.

Economy and Competitiveness in Practice

Timber is often perceived as expensive. But when you look at the full life cycle, the opposite is often true. Click & Build provides a solution that combines sustainability with profitability.

A timber façade delivers lower energy use over time, high durability, and a clear market advantage. Your customers today are asking for climate-smart options, and architects are

looking for partners who can deliver modern timber façades. Being able to present a system with up to 50% lower CO₂ footprint than aluminium or steel is a competitive edge in every tender.

For you, this means a higher chance of winning contracts, strengthening your position, and developing your brand.



Timber as Your Natural Choice

From a technical perspective, glulam is strong, dimensionally stable, and easy to process. Our profiles can be tailored to your projects with a precision that matches metal-based systems.

From an aesthetic perspective, timber offers something unique. It is warm, vibrant, and gives buildings a character that metal can never replicate. Architects value the ability to work with slim profiles, visible timber surfaces, and colour-stable finishes that last over time.

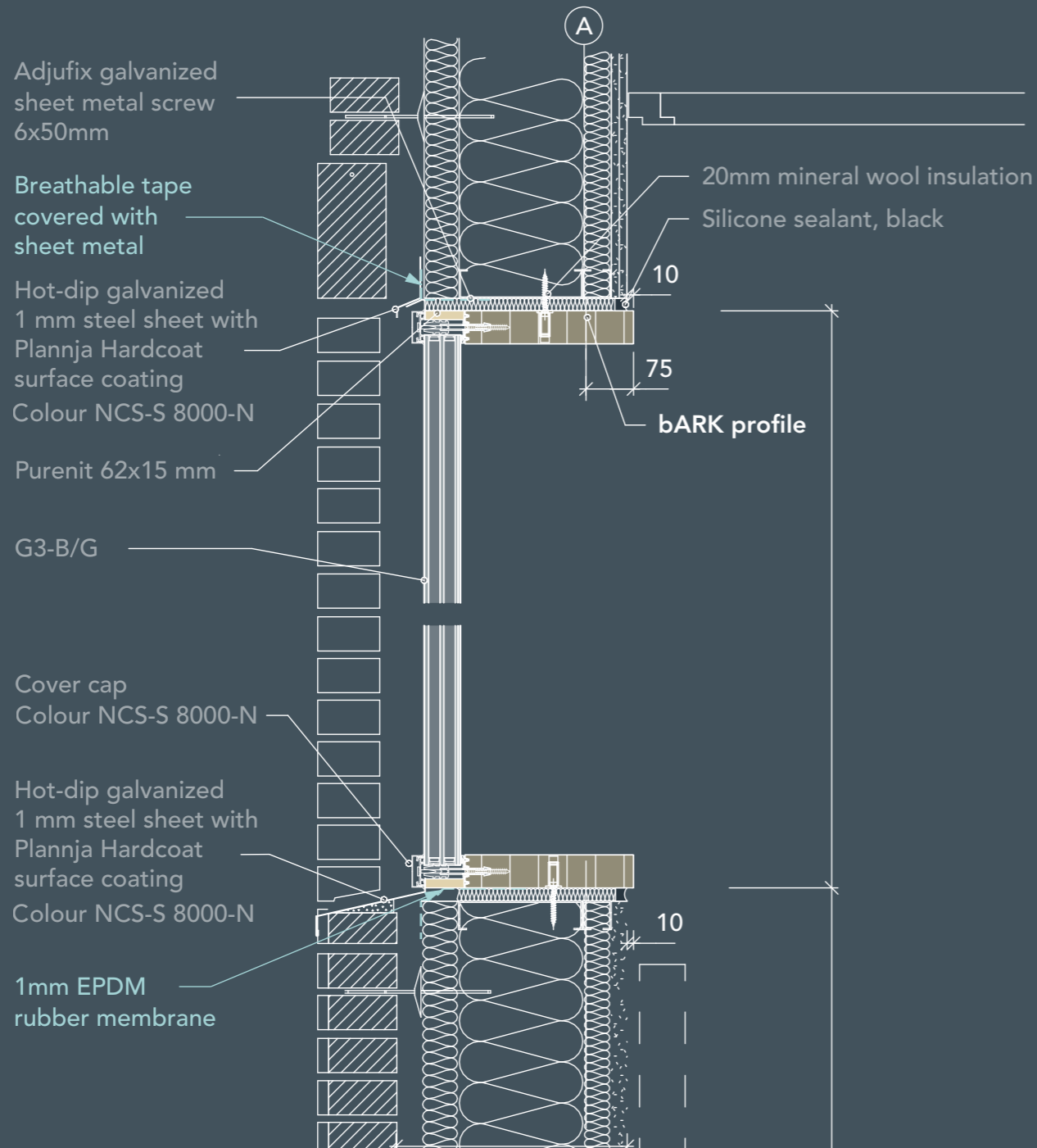
From a climate perspective, timber is unmatched. As a renewable resource, it stores carbon and helps reduce the total footprint of a building. With Click & Build, you can deliver façades that are not only technically sound but also aligned with the construction industry's transition to climate neutrality.

Confidence in Your Delivery

Click & Build is more than a product – it is a partner solution. We know that new materials can feel uncertain at first. That's why we support you every step of the way: from project management and structural calculations to installation manuals and even practical help if needed.

We can be available during project start-up and, if necessary, provide site management directly on-site. This makes your transition to timber simple, safe, and cost-effective.

bARK Click & Build – Stick and Partition



Facts and Certifications

In addition, the system is CE-marked, FSC and PEFC certified, and produced in compliance with ISO 9001 and ISO 14001. For you, this is a guarantee that the system meets the highest standards – technically, environmentally, and ethically.

- Moisture simulations for Nordic climate conditions.
- Fire ratings up to EI 60 / EW 60.
- Safety classification according to SK2, EKS.
- Burglar resistance according to EN 1627, classes RC2–RC4.
- Tested in accordance with EN 13830.
- Industry-leading U-values.

A Partner to Grow With

Working with bARK means you are never alone. We provide training and certification so your company can quickly get up to speed with timber façade construction. By certifying your staff, you can show your clients that you have the competence required – strengthening your credibility and making it easier for you to win new projects.

We also offer the option of creating project-specific EPDs (Environmental Product Declarations). For projects that require them, we can, against a service fee and with access to the necessary information, provide a complete EPD that you can use in your tender. This

gives you an extra edge in competition and allows you to deliver exactly what environmentally conscious clients are looking for.

We see this as a service to you. By supporting you with documentation and certifications, we increase your chances of winning contracts and building long-term relationships with your customers.

With Click & Build you get a system that is tested, certified, and built to last – but above all, you gain a partner who is committed to your success. We believe the façades of the future are built in timber. Together, we can show why.



bARK

CLICK & BUILD

www.barkproduction.se